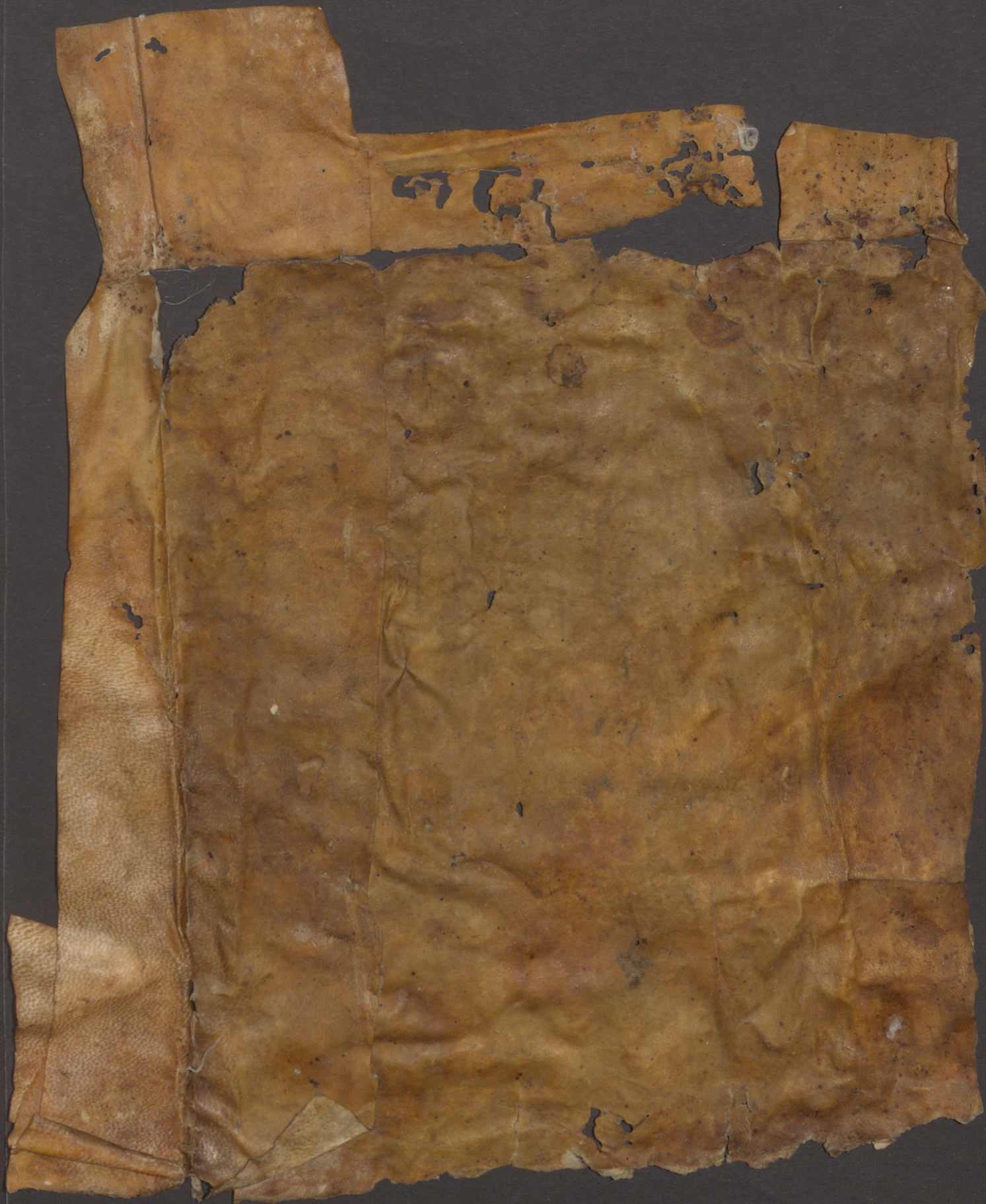
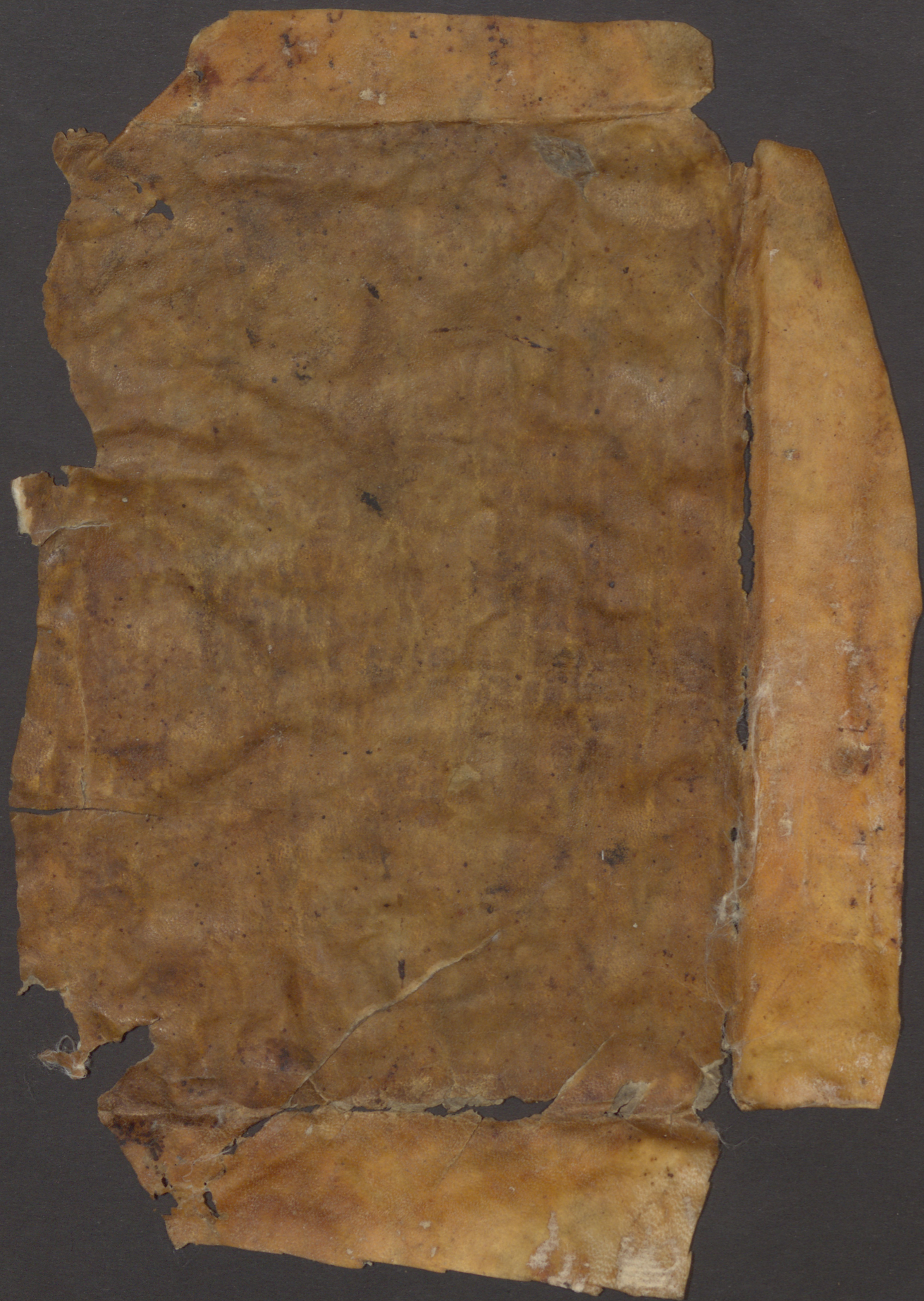


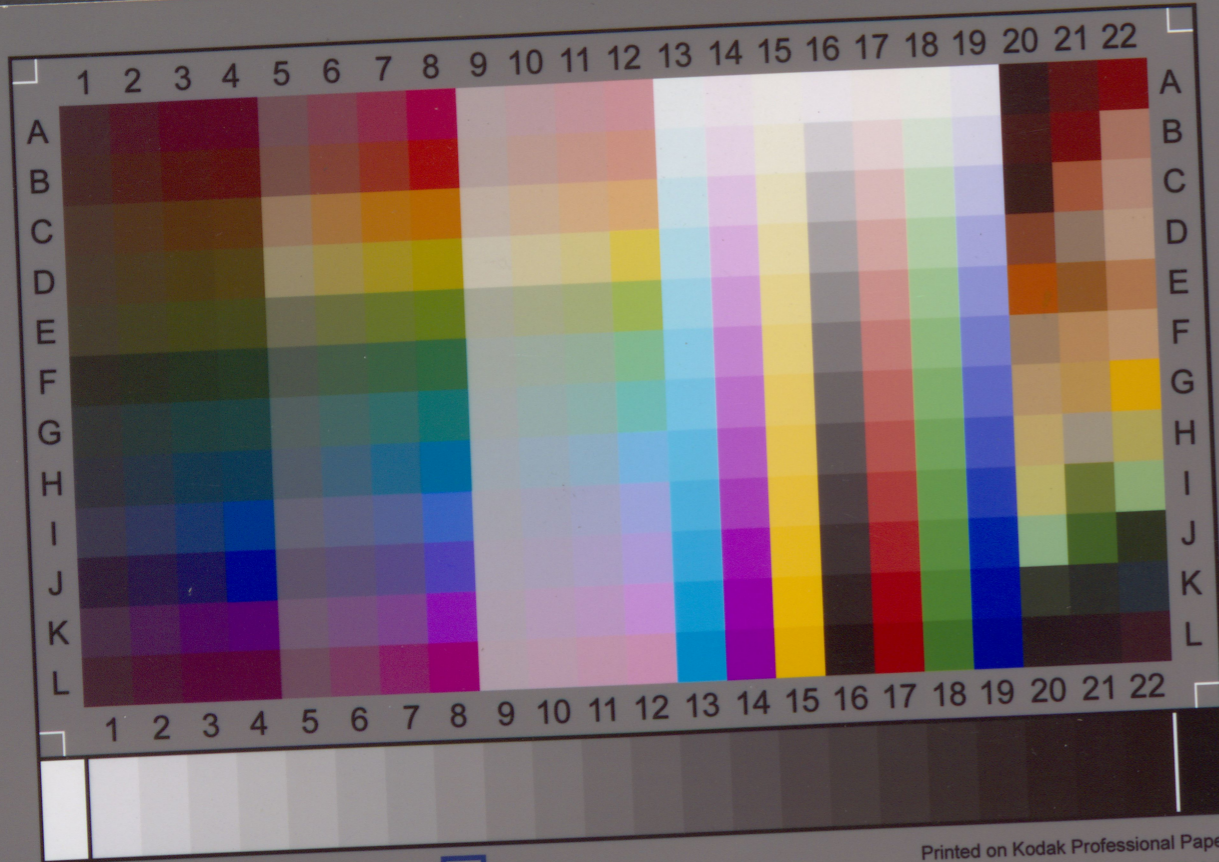
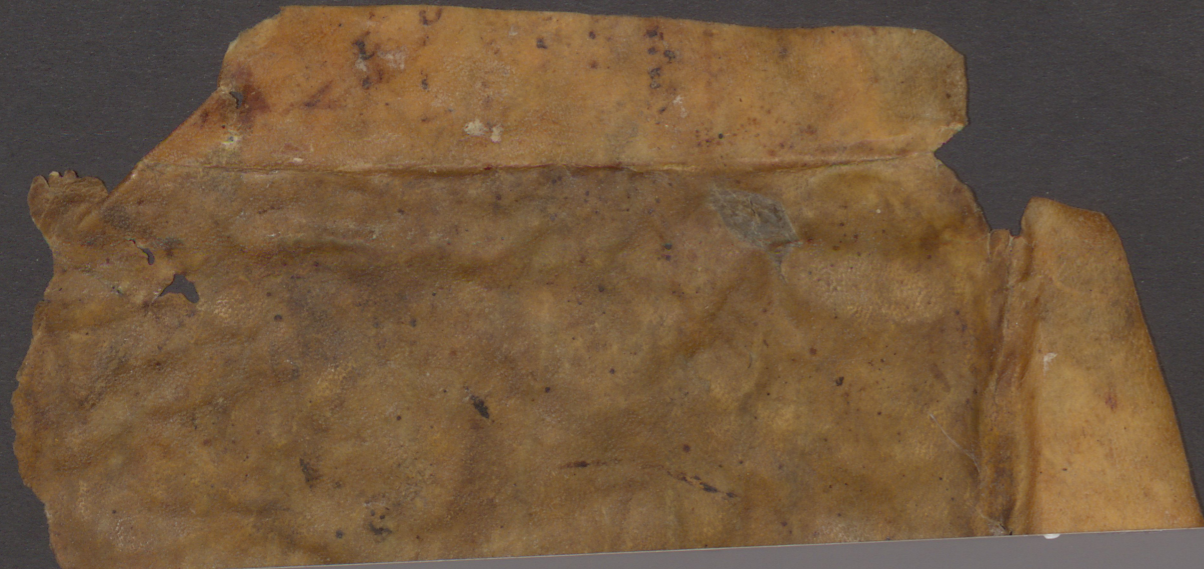
Fragment of an ancient Hebrew manuscript, likely a scroll, showing several lines of text in Hebrew script. The parchment is heavily damaged, with significant staining, discoloration, and missing sections. The text is written in a cursive hand, characteristic of medieval Hebrew manuscripts. A large, decorative initial letter is visible on the right side of the fragment.

Fragment of an ancient Hebrew manuscript, likely a scroll, showing several lines of text in Hebrew script. The parchment is heavily damaged, with significant staining, discoloration, and missing sections. The text is written in a cursive hand, characteristic of medieval Hebrew manuscripts. A large, decorative initial letter is visible on the right side of the fragment.

Fragment of an ancient Hebrew manuscript, likely a scroll, showing several lines of text in Hebrew script. The parchment is heavily damaged, with significant staining, discoloration, and missing sections. The text is written in a cursive hand, characteristic of medieval Hebrew manuscripts. A large, decorative initial letter is visible on the right side of the fragment.

Fragment of an ancient Hebrew manuscript, likely a scroll, showing several lines of text in Hebrew script. The parchment is heavily damaged, with significant staining, discoloration, and missing sections. The text is written in a cursive hand, characteristic of medieval Hebrew manuscripts. A large, decorative initial letter is visible on the right side of the fragment.



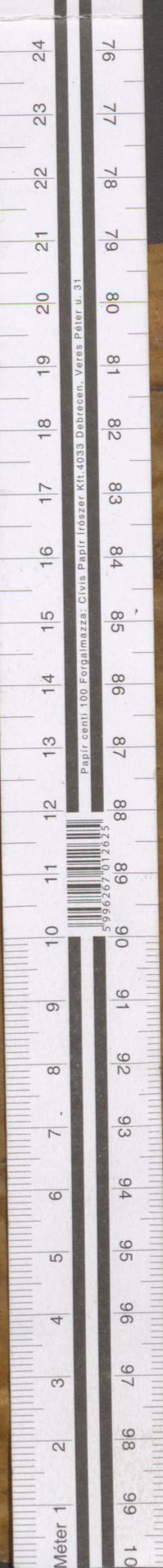


IT8.7/2-1993
2013:08



IT-8 Target

Printed on Kodak Professional Paper
Charge: R130810



Papír centli. 100. Forgalmazza: Clavis Papír Írószter. Kft. 4033 Debrecen, Varos Péter u. 31.

